

# WSD F05

Note:  
Drawing shows Spindle Set Up for Ambulant Threshold MXS/15/2  
There are two options - Flat Threshold, and Modified Subcill

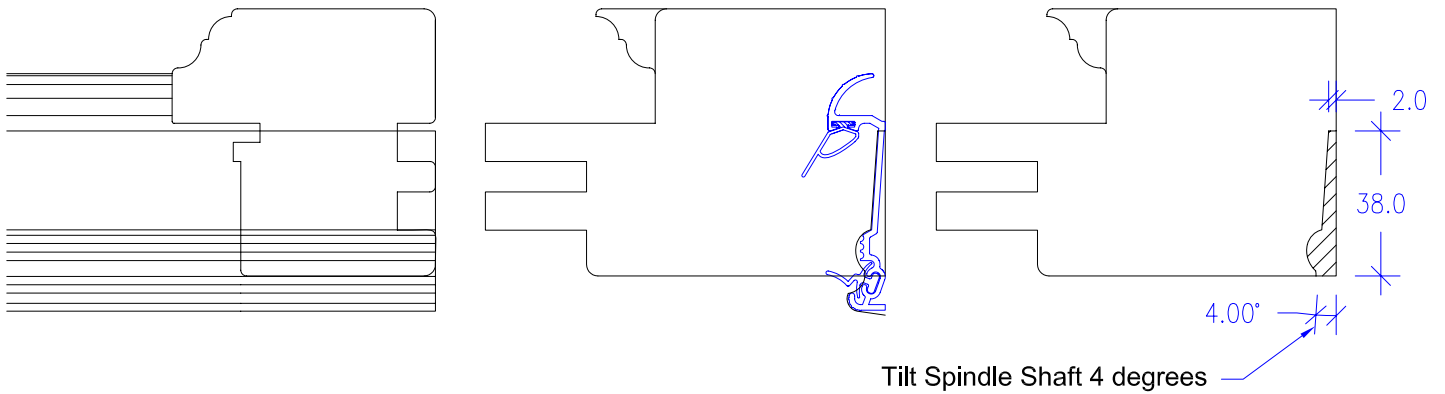
### Door Leaf Process:

Standard Process

### Frame Jamb Process:

- 1) *Window Line* - Comb only (do not profile)
- 2) *Ancillaries* - Comb jamb btms for threshold
- 3) *Window Line* - Profile the pair
- 4) *Maka 1* - Hinge locations
- 5) *Cramp*

### Flat Threshold Option



### Modified Subcill Option

